



cockroaches

Cockroaches are primitive and highly successful animals, their general body form has changed little in the past 3000 million years. They have adapted well to human habitations and live in most human communities around the world.

They are known as pest insects because they cohabit with humans in dwellings, especially in kitchens, where some species can carry disease organisms like **Salmonella**, which may cause gastroenteritis, dysentery, tuberculosis, hepatitis, typhoid fever and many other human disorders

Cockroaches can also carry viruses and eggs of worm parasites. The health threat posed by cockroach populations closely cohabiting with humans justifies their control in premises.

After mating, the cockroach can produce between 12 and 40 eggs in a purse shaped egg case; this can be glued to a surface and left or dropped prior to hatching. They can live for over a year and a female cockroach can produce up to 1200 eggs during her adult life.

Types of cockroaches

German cockroach

The body of an adult German cockroach is about 12mm long. It is beige to light brown in colour, with two dark stripes on the back of its head. It is the most widespread and successful cockroach and is commonly found in homes, apartments, restaurants, food processing plants, supermarkets and warehouses.

The German cockroach seeks warm moist conditions with easy access to foods. They like to hide during the day in dark secure places, usually in harbourage areas near sinks, dishwashers, cracks and crevices in the pantry, kitchen and bathrooms cupboards, under electrical heating and cooking appliances and inside wall cavities or behind skirting boards. They can often be seen on the undersides of drawers or bench tops.

American cockroach

The American cockroach is the largest of the cockroach pest species. Its adult body is 30 to 50mm in length and is reddish brown with a yellowish band behind the head. It lives in warm, moist, dark conditions – indoors in colder regions, but mainly outdoors in warmer regions. Its preferred daytime habitats are the warm, dark, moist locations associated with sewers, cavity walls, roof and sub floor voids. They often congregate around hot water pipes, fridge motors, boilers and other heating appliances.

The female lifespan is up to two years; under ideal conditions they quickly reach plague proportions. An adult without food or a water source may survive for about two to three months

Other cockroaches

Native Australian black cockroach;

Black with a white margin and grows to 35mm in length

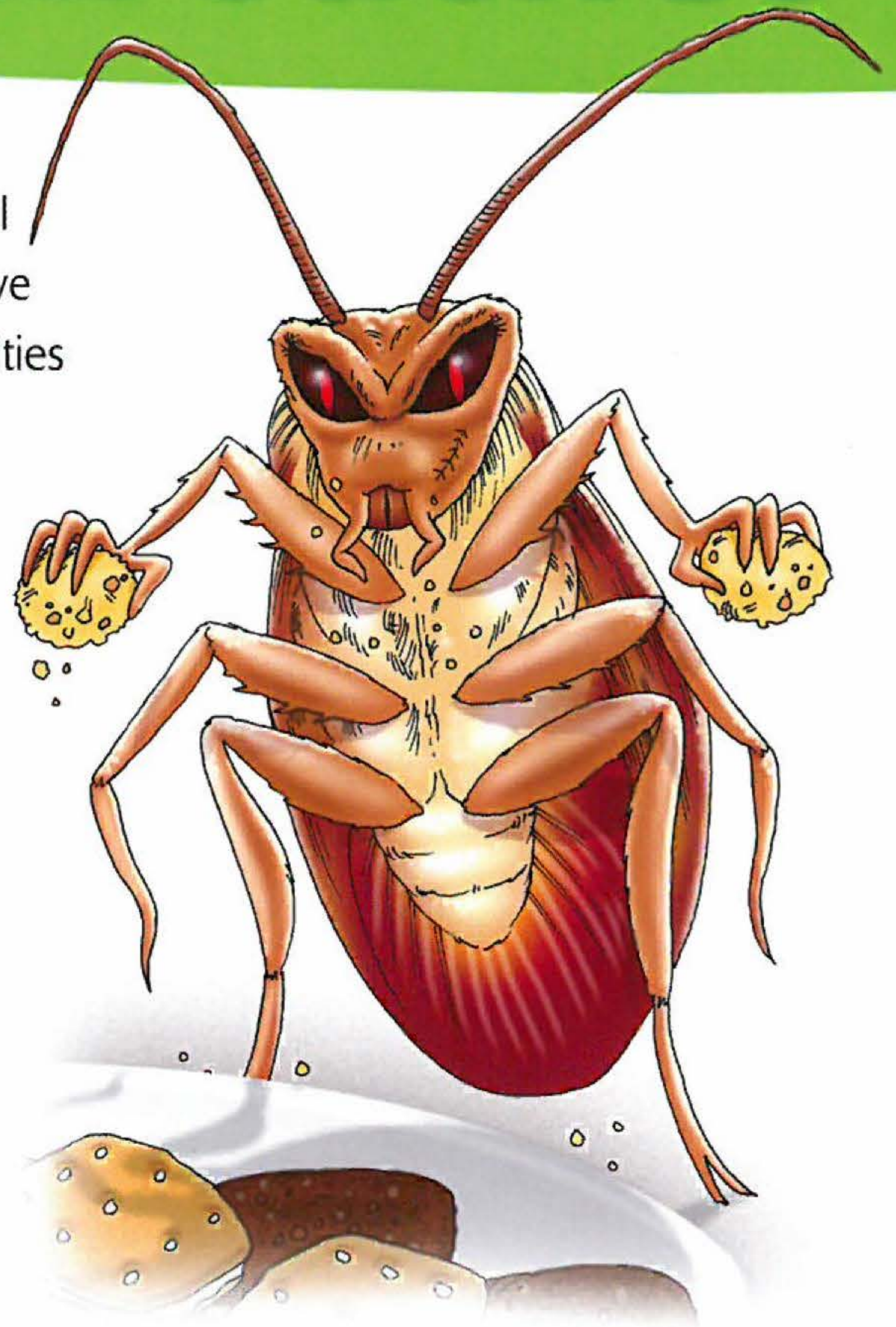
Brown banded cockroach;-

Pale brown with very pale bands across the thorax and abdomen.

Helpful hints

- Avoid leaving food contaminated surfaces (benches, plates, dishes) overnight
- Reduce water availability overnight; mop up puddles, fix dripping taps and seal around sinks
- Store food in sealed containers
- Inspect incoming food packaging and cardboard boxes for eggs
- Store garbage in sealed containers

Information sourced from Department of Agriculture



environmentally aware pest & weed management