

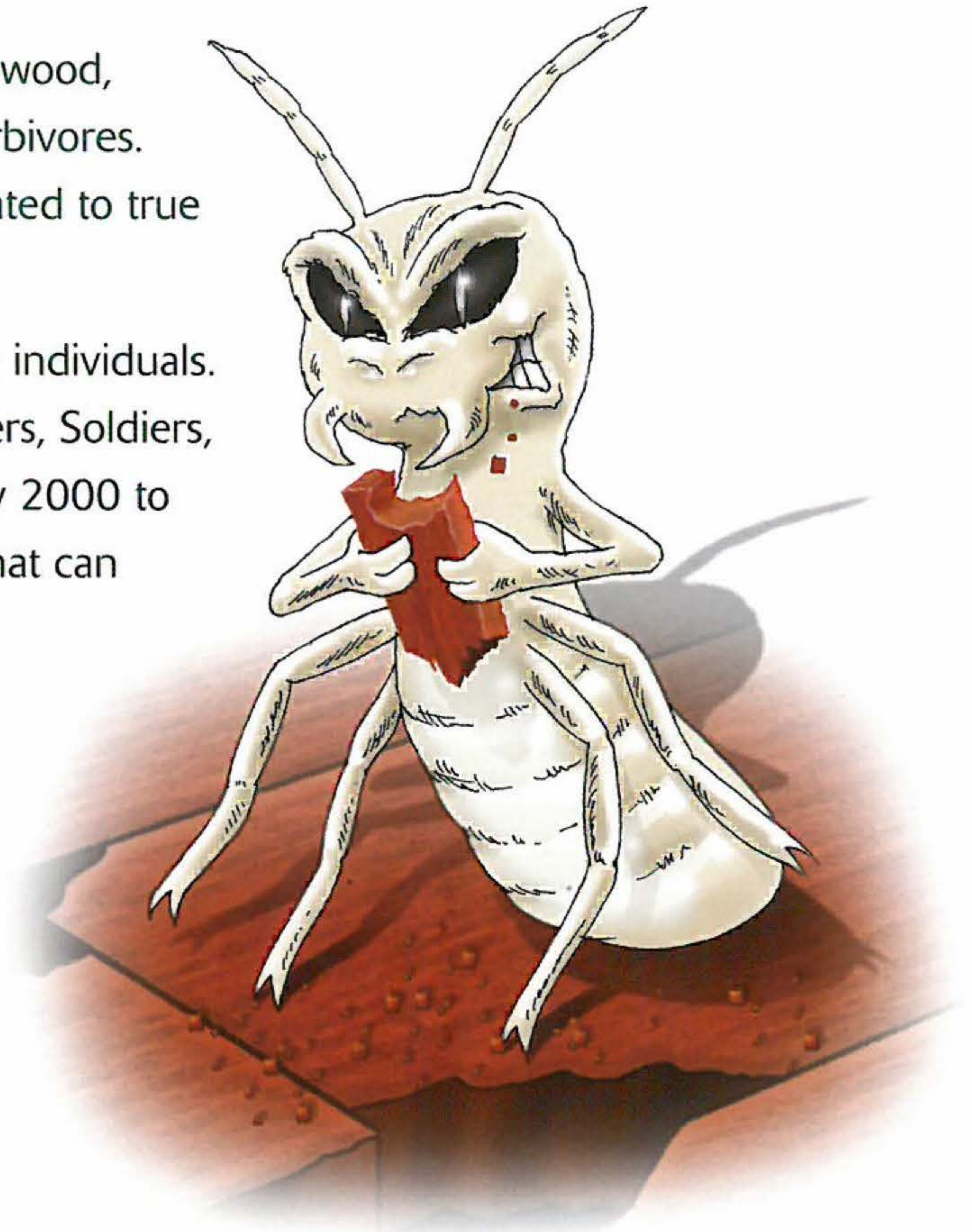


termites

Termites are small soft bodied, social insects that feed on wood, grass, dead leaves, bark, humus, fungi or the dung of herbivores. They are commonly known as white ants, but are not related to true ants.

Termites live in colonies that may consist of over a million individuals. The colony is divided into castes (i.e. Queen, King, Workers, Soldiers, and Alates (flying Reproductive's), and the queens can lay 2000 to 3000 eggs per day. Worker Termites are the only caste that can chew and digest the cellulose in wood and are the most numerous caste in the colony.

They are active in nearly every residential block and represent a major threat to stored products, and timber used in the construction of buildings, it is estimated that one in five homes have a history of termite damage and they cause millions of dollars worth of damage every year in Australia.



What to do if you find Termites.

If you see or suspect that you have located any termite activity DO NOT DISTURB THEM.

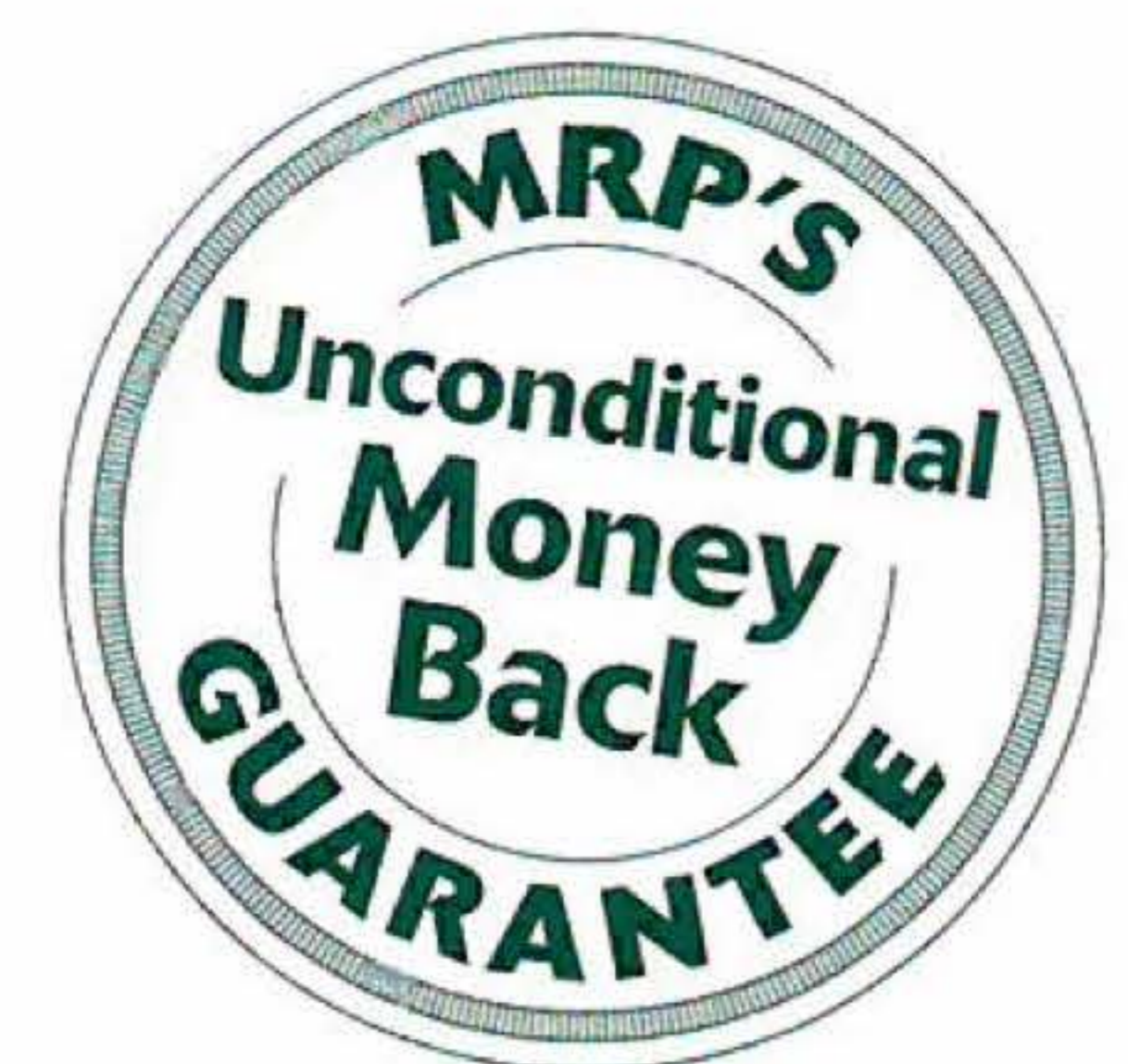
Contact MRP and we will send out one of our professional Pest Management Technicians to carry out a free assessment and provide an obligation free quotation.

Disturbing Termite activity may cause the termites to retreat into the ground which makes it more difficult to achieve colony elimination.

Helpful Hints.

As with most pests, prevention is the best cure for Termites. Here are some ideas that may prevent termites from attacking your home.

- Make sure all stored timber is elevated off the ground and away from the house.
- Where possible ensure that the external perimeter of your home is free of moisture such as leaking gutters, water heater and air/con overflows and reticulation.
- Use termite resistant materials for constructions in the yard.



environmentally aware pest & weed management

Information sourced from Department of Agriculture